

This document was created using best practices in document accessibility. Should you need assistance reading or understanding this document, call 902-543-8181 or email [info@modl.ca](mailto:info@modl.ca).

## **Policy & Strategy Committee Meeting Agenda**

**Tuesday, March 17, 2026, 9:00 a.m.**

**MODL Council Chambers, 10 Allée Champlain Drive Cookville NS**

- 1. Call to Order**
  - 1.1 Mi'kma'ki Territorial Acknowledgement
- 2. Announcements, Acknowledgements, Recognition**
- 3. Public Input (15 Minutes)**
- 4. Changes/Approval of Agenda (as circulated)**
- 5. Approval of Minutes – February 17, 2026 (as circulated)**
- 6. Business Arising from Minutes**
- 7. Presentations/Scheduled Times**
  - 7.1 MICA re Blue Lantern Shellfish (Syd Dumaresq)..... 9:15 a.m. 1-16
- 8. Referral from Council – Nil**
- 9. Staff Reports**
  - 9.1 Recreation, Parks & Tourism Department**
    - 9.1.1 Proposed Policy 103 Active Transportation..... 17-25
    - 9.1.2 Miller Point Peace Park Advisory Committee Dissolution ..... 26-27
- 10. Mayor's/Deputy Mayor's/Councillors' Matters**
  - 10.1 Council Deliberation re Blue Lantern Shellfish
- 11. Added Items**
- 12. In Camera**
  - 12.1 Contract Negotiations under Section 22(2)(e) of the MGA
- 13. Adjournment**

# Blue Lantern Shellfish



Mahone Islands  
Conservation Association

MODL

March 17, 2026



## MICA Mission

To protect and conserve the natural environment of the islands and shoreline of Mahone Bay and the traditional, social and recreational opportunities valued by its various communities



# Mahone Islands Conservation Association

PLEASE LEAVE ONLY YOUR FOOTPRINTS



## MICA PARTNERED PROPERTIES TITLE HOLDER

*In order of acquisition date:*

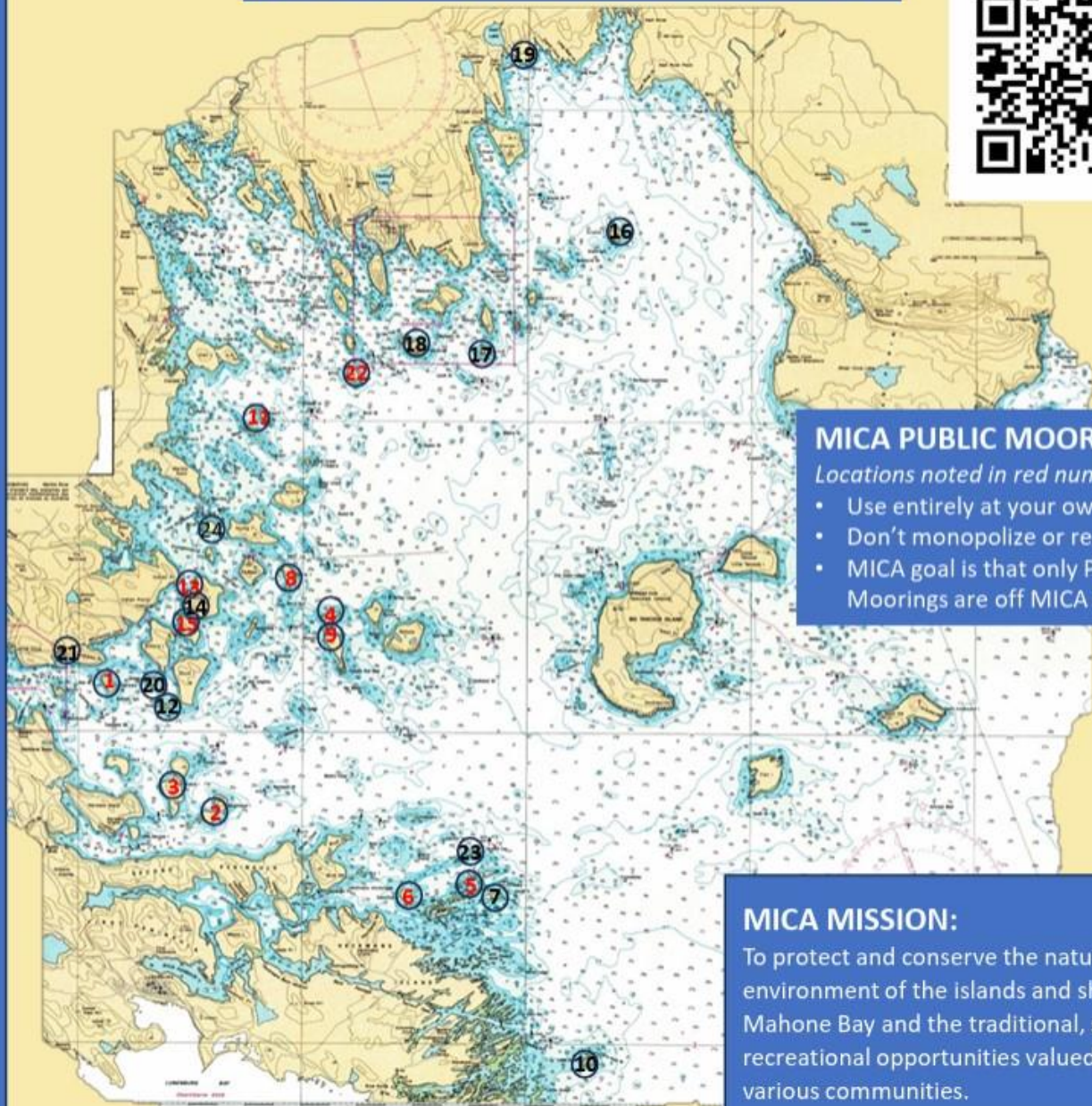
1.	Andrews Island	PNS
2.	Backmans Island	PNS
3.	Covey Island	PNS
4.	Masons Island (northern end)	MODL
5.	Long, Dry, Snipe & Centre Islands	PNS
6.	Sacrifice Island	PNS
7.	Shag Island	PNS
8.	Bella Island	PNS
9.	Masons Island (big cove)	PNS
10.	Little Duck Island	PNS
11.	Squid Island	PNS
12.	Goat Island	PNS
13.	Zwicker Island lot	PNS
14.	Zwicker Island lot	PNS
15.	Ernst Island property	PNS
16.	Snake Island	NCC
17.	Lynch Island	NCC
18.	Quaker Island	NCC
19.	Moland Point lots	MOC
20.	Sheep Island	NCC
21.	Oakland Conservation Area	MODL
22.	Birch Island (Chester)	PNS
23.	Chockle Cap	PNS
24.	Birch Island (Martins Point)	PNS

PNS: Province of Nova Scotia  
 MODL: Municipality of the District of Lunenburg  
 MODC: Municipality of Chester  
 NCC: Nature Conservancy of Canada

Please consider joining and /or donating to MICA.

[www.mahoneislands.ns.ca](http://www.mahoneislands.ns.ca)

April 14, 2025



**MICA PUBLIC MOORINGS**  
*Locations noted in red numbers.*

- Use entirely at your own risk.
- Don't monopolize or reserve.
- MICA goal is that only Public Moorings are off MICA islands.

**MICA MISSION:**  
 To protect and conserve the natural environment of the islands and shoreline of Mahone Bay and the traditional, social and recreational opportunities valued by its various communities.

# MICA – MODL Partnerships



Birchy Is

MOCA

Andrews Is

Mason's Is

Sacrifice Is





# Mahone Islands Conservation Association

## MICA PARTNERED PROPERTIES TITLE HOLDER

*In order of acquisition date:*

- |                                      |      |
|--------------------------------------|------|
| 1. Andrews Island                    | PNS  |
| 2. Backmans Island                   | PNS  |
| 3. Covey Island                      | PNS  |
| 4. Masons Island (northern end)      | MODL |
| 5. Long, Dry, Snipe & Centre Islands | PNS  |
| 6. Sacrifice Island                  | PNS  |
| 7. Shag Island                       | PNS  |
| 8. Bella Island                      | PNS  |
| 9. Masons Island (big cove)          | PNS  |
| 10. Little Duck Island               | PNS  |
| 11. Squid Island                     | PNS  |
| 12. Goat Island                      | PNS  |
| 13. Zwicker Island lot               | PNS  |
| 14. Zwicker Island lot               | PNS  |
| 15. Ernst Island property            | PNS  |
| 16. Snake Island                     | NCC  |
| 17. Lynch Island                     | NCC  |
| 18. Quaker Island                    | NCC  |
| 19. Moland Point lots                | MOC  |
| 20. Sheep Island                     | NCC  |
| 21. Oakland Conservation Area        | MODL |
| 22. Birch Island (Chester)           | PNS  |
| 23. Chockle Cap                      | PNS  |
| 24. Birch Island (Martins Point)     | PNS  |

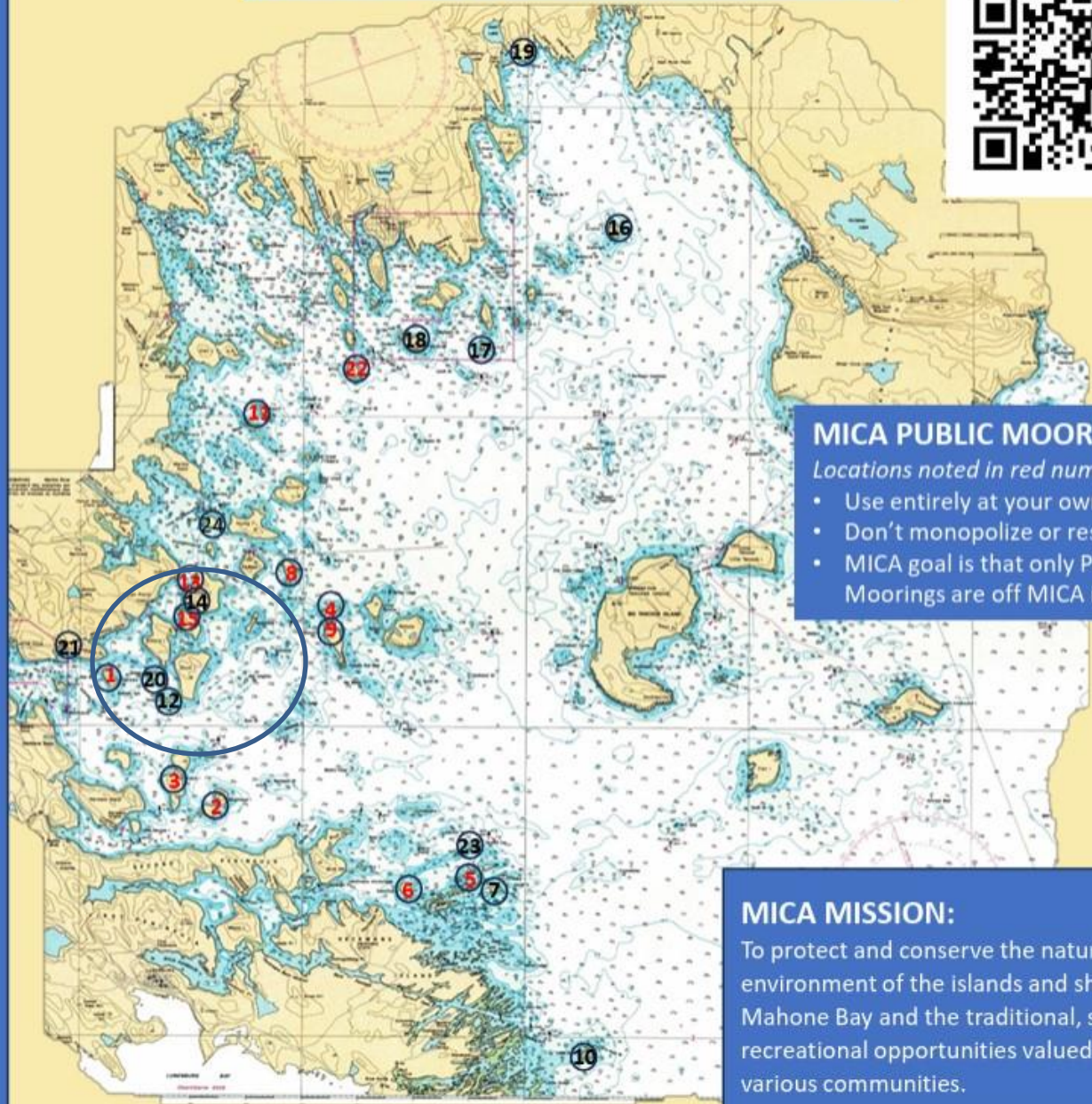
PNS: Province of Nova Scotia  
 MODL: Municipality of the District of Lunenburg  
 MODC: Municipality of Chester  
 NCC: Nature Conservancy of Canada

Please consider joining and /or donating to MICA.

[www.mahoneislands.ns.ca](http://www.mahoneislands.ns.ca)

April 14, 2025

**PLEASE LEAVE ONLY YOUR FOOTPRINTS**



### MICA PUBLIC MOORINGS

- Locations noted in red numbers.*
- Use entirely at your own risk.
  - Don't monopolize or reserve.
  - MICA goal is that only Public Moorings are off MICA Islands.

### MICA MISSION:

To protect and conserve the natural environment of the islands and shoreline of Mahone Bay and the traditional, social and recreational opportunities valued by its various communities.





The Narrows

Indian Point

Mahone Bay

MIOCA

Andrews Is.

Fauxburg

Maders Cove

Hermans  
Island

Second Peninsula

The Narrows

Kaulback Is

Zwickers Is

Indian Point

Ernst Is

Gifford Is

Andrews Is

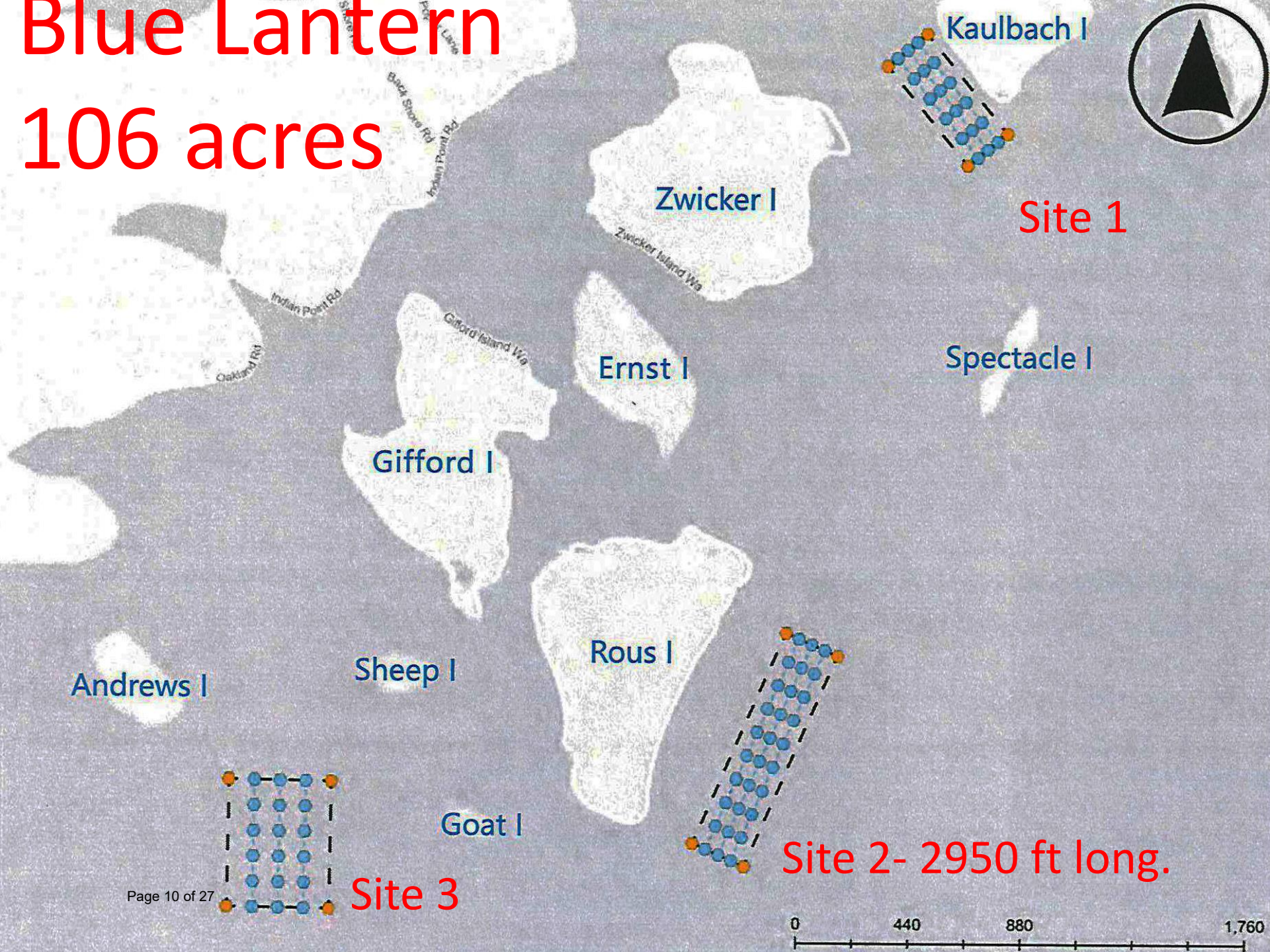
Rous Is

Sheep Is

Goat Is

# Blue Lantern

106 acres

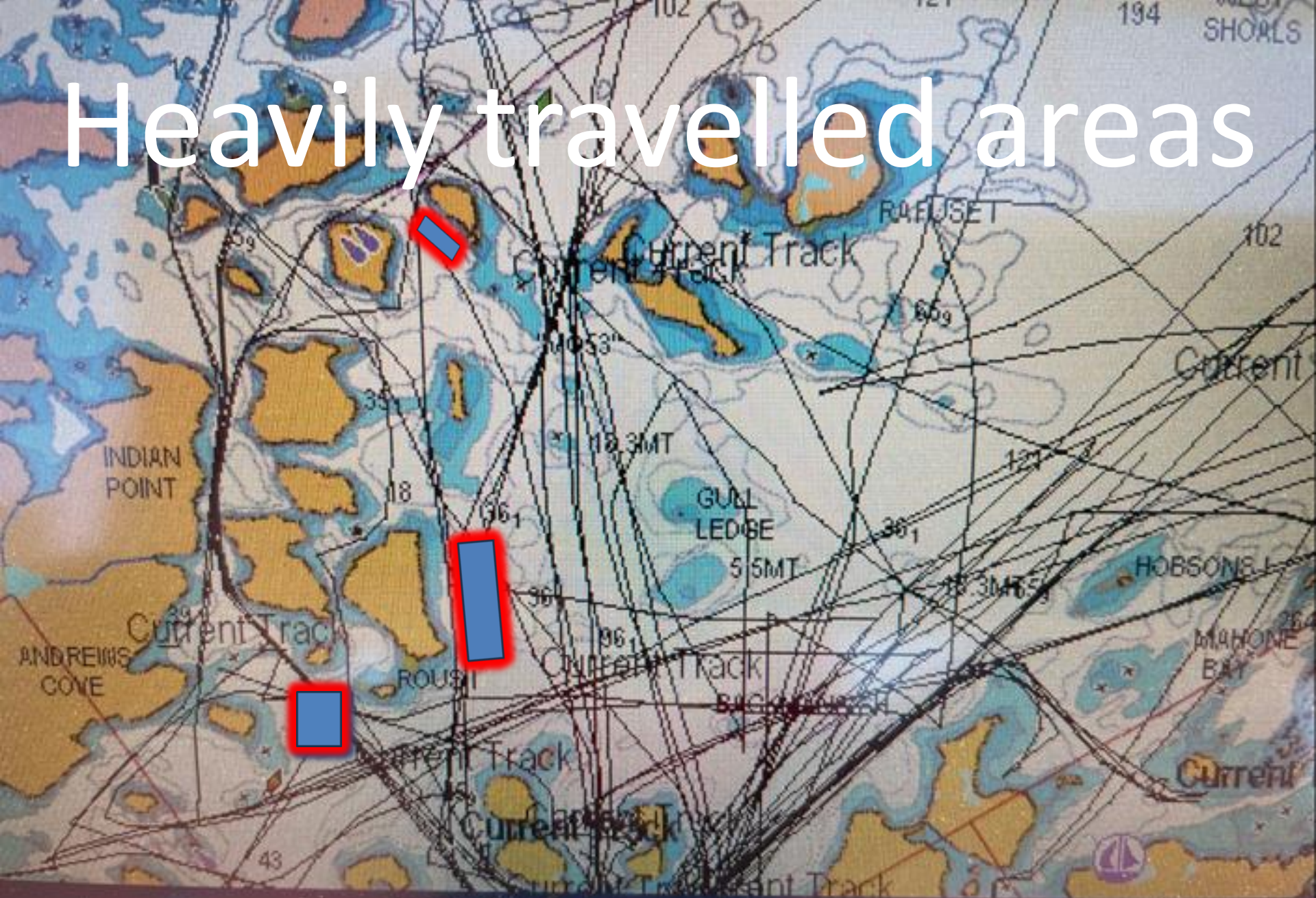


# The Narrows

106 acres totally removed  
from public access



# Heavily travelled areas









Thank you.

Please enjoy and respect our islands.

Together we are creating a legacy for  
current and future generations.



## The Municipality of the District of Lunenburg

### Request for Decision

**Report to:** Policy and Strategy Committee  
**Submitted by:** Moira Frier, Active Living Coordinator  
**Date:** March 17, 2026  
**Re:** Policy 103 Active Transportation

---

#### Recommendation

That the Policy and Strategy Committee recommends that Council approve new Policy 103 Active Transportation as presented and hereby gives 7 days' notice of Council's intent to adopt at the March 24, 2026, Council Meeting.

#### Executive summary

Staff are seeking Council approval for a policy-based approach to Active Transportation (AT) in the Municipality of the District of Lunenburg. The proposed AT Policy provides a public-facing framework for advancing AT initiatives, while the AT Plan acts as an internal working document to guide staff in planning.

#### Background

Active transportation refers to the movement of people or goods powered by human activity, including walking, cycling, mobility devices, and e-bikes. It contributes to healthier residents, stronger community connections, environmental sustainability, and a more balanced transportation system overall. Municipalities play an important role in supporting active transportation through the planning, design, and implementation of infrastructure such as sidewalks, trails, bike routes, and safe crossings. Active transportation is also supported through municipal planning, the programs and services offered to residents, and how municipalities prioritize and invest in transportation and recreation initiatives.

MODL first adopted an Active Transportation Plan in 2010, demonstrating early leadership among rural municipalities in promoting active mobility. In 2023, Urban Systems was contracted to develop an updated AT Plan, with a focus on community engagement and actionable priorities that balance feasibility, safety, and community identified needs. The updated plan, finalized in June 2024, highlighted nine community-identified priorities and outlined facility types, implementation phases, and estimated costs over a ten-year period to advance AT throughout the Municipality.

Council received the updated plan as an information item in December 2025 and provided feedback and concerns, emphasizing the importance of managing public expectations, maintaining flexibility, ensuring financial responsibility, and focusing on areas where MODL has more direct influence. In response to Council's feedback, staff are proposing a policy-based approach: a public-facing AT Policy to demonstrate Council's commitment to advancing AT, while retaining the AT Plan as an internal working document to guide implementation, decision-making, and program delivery.

### **Strategic Focus**

Active Living Strategy:

#### 1) Strategic Direction 3: Natural and Built Environments

- a) 3.1 Enhance community use of natural spaces such as trails, parks, open spaces, waterways, etc. across MODL
  - i) Identify potential improvements for walkability and access to trails and parks and support municipal implementation of changes
  - ii) Promote existing trails, parks and open spaces in MODL to increase use of existing spaces and walking
  
- b) 3.2 Enhance opportunities for safe and active routes within communities across MODL
  - i) Collaborate with the other municipal departments to optimize plans, strategies, and policies to support the natural and built environment including enhancing connectivity of transportation routes for active transportation
  - ii) Initiate innovative approaches to address barriers to access due to lack of transportation, and transportation infrastructure, in rural areas
  - iii) Partner with local communities to support and enhance safe walking and wheeling options in rural areas across MODL
  - iv) Support the development and implementation of a plan to improve trail etiquette and safety.

#### 2) MODL Strategic Priorities:

- a) Quality of Life: programs and services to maintain and improve affordability and social inclusion for our residents

- b) Climate Change Action Strategic Priority: Working to reduce greenhouse gas emissions and adapt to the changing climate
- c) Infrastructure upgrades, expansion and management: planning and investing for growth

### **Budget/Financial Implications**

The policy itself does not require funding. Specific AT projects would come forward through annual capital and operating budgets, five-year capital planning and funding opportunities.

### **Climate Change/sustainability**

Active Transportation supports low-carbon, sustainable transportation modes, reducing reliance on vehicles and contributing to MODL's climate action goals.

### **Inclusion, Diversity, Equity and Accessibility (IDEA@MODL)**

The Active Transportation Policy establishes guiding principles and procedures that encourage equitable access to safe and convenient active transportation options for residents of all ages, incomes, and abilities. This includes walking, cycling, mobility devices, and accessible programs such as e-bike loans and community education initiatives. By embedding inclusion and accessibility into planning and program delivery, the policy supports a more connected, equitable, and welcoming community.

### **Strategic Communications**

If approved by Council, the policy will be posted on the municipal website and referenced in future communications related to active transportation initiatives.

### **Work plan**

With the policy in place, staff would advance AT initiatives using the policy as a guiding framework and bring projects forward through the annual capital and operating budgets, five-year capital planning and grant opportunities and community partnerships. The internal AT Plan will continue to guide project planning and program delivery for the Active Living Coordinator with the Recreation, Parks and Tourism Department.

### **Alternatives**

Option 1: Request revisions and defer approval to a later Council Meeting

Option 2: Do not adopt a policy-based approach and continue managing AT initiatives using the 2010 AT Plan.

### **Conclusion**

Staff recommend that the Policy and Strategy Committee recommend that Council approve the new Policy 103 Active Transportation.

<b>Report Preparation</b>	
<b>Department</b>	Recreation, Parks and Tourism
<b>Report Prepared by</b>	Moira Frier, Active Living Coordinator
<b>Report Approved by</b>	
<b>Date Reviewed by C.A.O.</b>	

# Municipality of the District of Lunenburg

Policy Details	
<b>Name</b>	Active Transportation
<b>Number</b>	103
<b>Legislative Authority</b>	Municipal Government Act - Section 47, 48(3)
<b>Effective Date</b>	

## Purpose

- 1 (1) The Active Transportation Policy seeks to provide safe, convenient, and attractive opportunities for all residents and visitors to walk, cycle, and use other human-powered modes of transportation. The policy supports alternatives to vehicular travel, and promotes social connection, and economic, recreational, and environmental benefits. It guides the Municipality in creating communities where Active Transportation is the easy and preferred choice for travel, recreation, and daily life.
- (2) The Municipality recognizes the importance of providing residents and visitors with improved infrastructure and networks for safe and enjoyable self-propelled transportation.

## Definitions

- 2 (a) Active Transportation means the movement of people or goods powered by human activity, including:
  - (i) walking,
  - (ii) cycling,
  - (iii) skateboarding/longboarding,
  - (iv) horseback riding,
  - (v) rollerblading,
  - (vi) paddling,
  - (vii) skiing/snowshoeing,
  - (viii) mobility aids,
  - (ix) scooters, and
  - (x) e-bikes.

## Goals

- 3 The goal of an Active Transportation Policy is to foster a cultural shift in the Municipality where active transportation is recognized as a safe, convenient and valued mode of transportation for residents of all ages and abilities. Achieving a well-connected and comprehensive active transportation network will promote physical activity and improve community health, while contributing to economic and tourism development. It will also enhance community and reduce the environmental impacts associated with transportation.

## Guiding Principles

4 The following principles guide the implementation of this Policy:

- (1) **Education and Awareness** - The Municipality supports education and awareness initiatives that encourage safe and informed participation in Active Transportation.
- (2) **Safety, Convenience, and Accessibility** - Active Transportation infrastructure and programs aim to prioritize safety, convenience, and accessibility for users of all ages and abilities.
- (3) **Community Connections** - The Municipality aims to support connected networks that link neighbourhoods to schools, workplaces, services, recreation, and community destinations.
- (4) **Right Intervention, Right Place** - Planning and investment decisions take local needs and conditions into account when choosing appropriate solutions.
- (5) **Attractiveness and Enjoyment** - Active Transportation routes and spaces focus on being welcoming, engaging, and enjoyable to use.
- (6) **Strategic and Opportunistic Action** - The Municipality uses a strategic approach to planning while leveraging opportunities such as infrastructure upgrades, partnerships, and funding programs.
- (7) **Collaboration** - The Municipality partners with residents, community groups, neighbouring jurisdictions, and other stakeholders to promote Active Transportation.
- (8) **Culture of Active Transportation** - The Municipality encourages a culture that values, supports, and celebrates Active Transportation as part of daily life.
- (9) **Alignment with Strategic Priorities** - Active Transportation initiatives are designed to support broader Municipal strategies, plans, and priorities.
- (10) **Partnership Development** - The Municipality aims to build and maintain strong internal and external partnerships to support implementation and long-term success.
- (11) **Financial Planning** – The Municipality aims to consider financial sustainability when advancing Active Transportation initiatives through the five-year capital planning process, annual operating and capital budgets, and external funding opportunities.

## Approaches and Procedures

- 5 (1) **Education and Awareness**

- (a) The Municipality aims to raise awareness of Active Transportation options and the benefits of healthy living, recreation, and sustainable communities through special events and promotions.
  - (b) The Municipality aims to support education and awareness initiatives for all road users to improve actual and perceived safety, fostering a culture that embraces and celebrates shared use of active transportation corridors.
  - (c) Education and awareness measures may consider the needs, rights, and responsibilities of all users.
  - (d) The Municipality recognizes that Active Transportation supports quality of life by promoting physical activity, mental well-being, social connection, and access to community spaces.
- (2) **Connectivity**
- (a) The Municipality aims to reduce travel times to help make Active Transportation a feasible way to travel.
  - (b) Active Transportation solutions aim to create a connected and comprehensive network with dedicated, safe and usable space for pedestrians, cyclists, and other Active Transportation users.
  - (c) The Municipality aims to take advantage of opportunities to add simple connections in the existing network that significantly improves travel times for Active Transportation users.
  - (d) When reviewing land use planning policies, including the Land-Use Bylaw and Municipal Planning Strategy, the Municipality aims to incorporate Active Transportation principals-
- (3) **Infrastructure Design and Amenities**
- (a) The Municipality encourages incorporating Active Transportation infrastructure, which can include safe crossings, traffic calming measures, multi-use trails, sidewalks, neighborhood greenways, and end-of-trip facilities such as bike racks.
  - (b) Active Transportation design aims to meet the needs of people of all ages and abilities in streets, trails, parks, public spaces, multi-use trails, and bikeway projects.
  - (c) The Municipality aims to integrate appropriate facilities into the initial design of street and public space projects to avoid the additional costs of retrofits.
  - (d) The Municipality may Install and maintain, as budgets permit, signage for all active transportation facilities.

(4) **Safety and Attractiveness**

- (a) The Municipality aims to make multi-use corridors safe, convenient, and accessible by incorporate landscaping and lighting in new developments and redevelopments to improve safety and attractiveness.

(5) **Collaboration**

- (a) The Municipality may actively seek opportunities to partner with other levels of government, businesses, and community organizations to achieve Active Transportation objectives.
- (b) The Municipality may work collaboratively with internal departments and external organizations to support and advance the goals of this Active Transportation Policy.

(6) **Regulation**

- (a) The Municipality follows applicable Federal and Provincial regulations to maintain safety and standards for Active Transportation.
- (b) The Municipality aims to align Municipal by-laws, policies, and planning documents are consistent with Active Transportation objectives.

(7) **Budget**

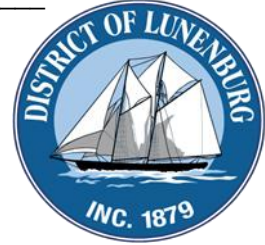
- (a) The Municipality recognizes the need for sustained funding of Active Transportation, including infrastructure improvements and maintenance, staff support, and education and awareness initiatives.
- (b) The Municipality reviews Active Transportation opportunities each year as part of the budget process.

(8) **Measurement and Evaluation**

- (a) The Municipality looks at data and trends to help make decisions, measure progress, and improve outcomes for this policy.
- (b) Evaluation efforts aim to support broader Municipal strategies and plans, including strategic priorities, climate action initiatives, and active living objectives.

<b>Policy Adoption</b>	
<b>Date of Original Passage</b>	
<b>Date of Notice of Intent to Consider (7 days' notice)</b>	
<b>Date of Council Approval</b>	
<b>Date of Effective Date</b> (if different from approval date)	
<b>I certify that this Policy 103 Active Transportation was adopted by Municipal Council as indicated above.</b>	
<b>Signature of Municipal Clerk</b>	<b>Date</b>

<b>Version</b>	<b>Amendment Description</b>	<b>Approval Date</b>
<b>Original V1</b>	Policy 103, Active Transportation	



## Municipality of the District of Lunenburg

### Request for Decision

**Report to:** Policy and Strategy Committee  
**Submitted by:** Tissy Bolivar, Program Coordinator  
**Date:** March 17, 2026  
**Re:** Dissolution of Miller Point Peace Park Advisory Committee

---

### Recommendation

That Policy and Strategy recommend to Council that Municipal Council approve the dissolution of the Miller Point Peace Park Advisory Committee.

### Executive summary

The Miller Point Peace Park Advisory Committee has been struggling to attract and retain active members for several years. The committee discussed its role and the future needs of the committee and made a recommendation to dissolve the committee.

### Discussion

Based on the Terms of Reference for the Miller Point Peace Park Advisory Committee, the committee shall consist of six residents of the Municipality, a recreation staff member, and one councillor. At present, there are 4 residents who are still involved with the committee, however, their terms have expired. As it has been difficult to attract and retain members for years, the committee started discussions about their role and the future needs of the committee.

The responsibilities of the committee, as outlined in the Terms of Reference are:

1. The Committee will work with recreation staff to establish a community plan for the Park.

2. The Committee will bring forth concerns, issues, and ideas from the community concerning the Park.
3. The Committee will advise recreation staff and Council on matters pertaining to the Park.
4. The Committee will provide recreation staff input on the operation and policies relating to the Park.
5. The Committee will research and examine issues, as directed by Council, and report findings to Council through the Committee of the Whole.
6. The Committee shall annually review the Community Plan to ensure it is meeting the needs of the community.
7. The Chair of the Committee may be requested to provide updates to Council.

The committee has been meeting up to three times a year, as needed.

Committee members are satisfied with the current management and maintenance of the park, planned capital projects, and do not feel their contributions as a committee are necessary at this time.

### **Budget implications**

This has no impact on the budget.

### **Strategic plan**

N/A

### **Work plan**

N/A

### **Conclusion**

It is the recommendation of staff and the committee to dissolve the Miller Point Peace Park Advisory Committee.

<b>Report Preparation</b>	
<b>Department</b>	Recreation, Parks, and Tourism
<b>Report Prepared by</b>	Tissy Bolivar, Program Coordinator
<b>Report Approved by</b>	Trudy Payne, Director of Recreation, Parks, and Tourism
<b>Date Reviewed by C.A.O.</b>	